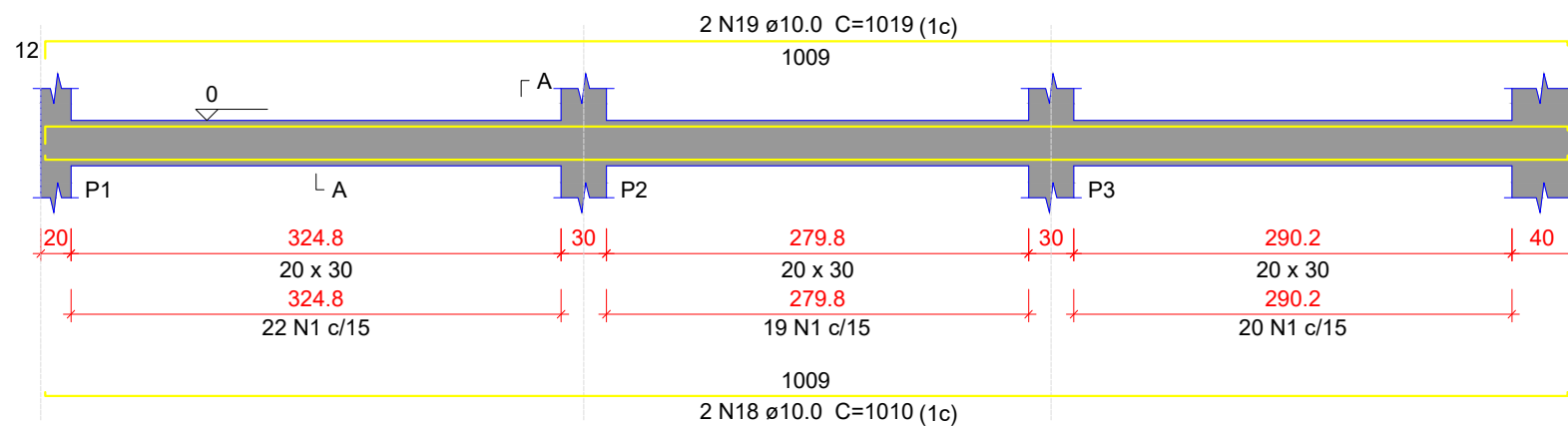
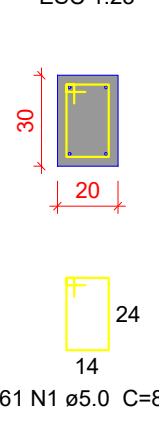


## VB101

ESC 1:50

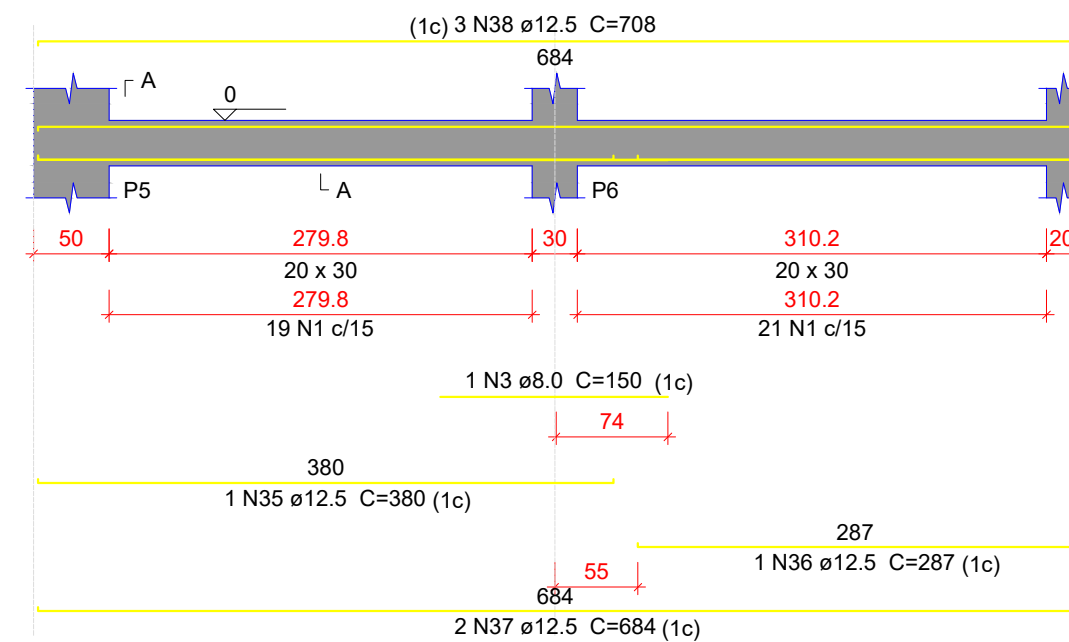


SEÇÃO A-A  
ESC 1:25

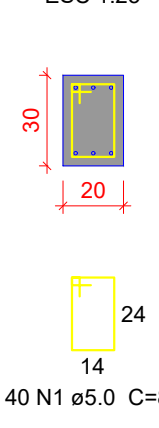


## VB102

ESC 1:50

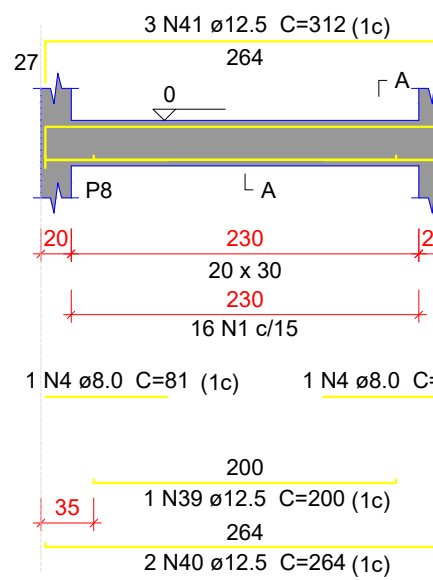


SEÇÃO A-A  
ESC 1:25

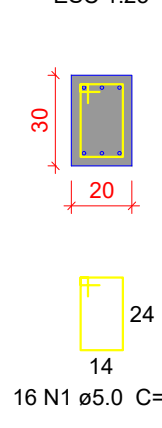


## VB103

ESC 1:50

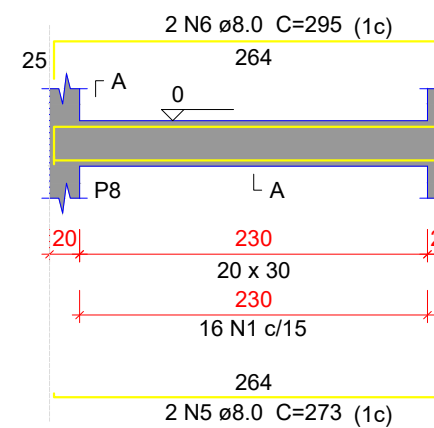


SEÇÃO A-A  
ESC 1:25

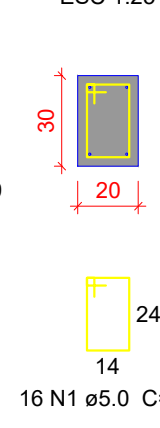


## VB104

ESC 1:50

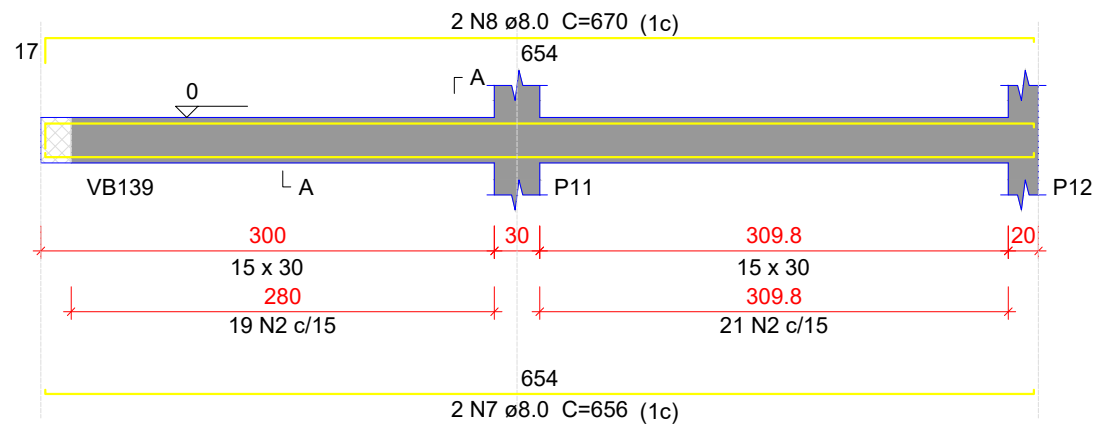


SEÇÃO A-A  
ESC 1:25

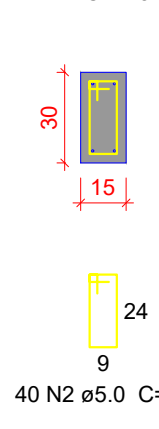


## VB105

ESC 1:50

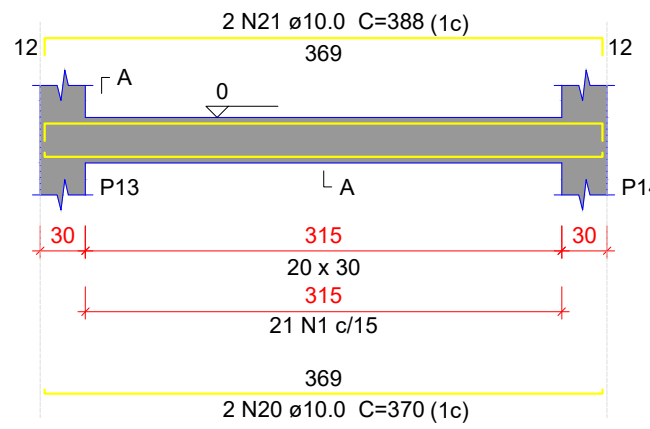


SEÇÃO A-A  
ESC 1:25

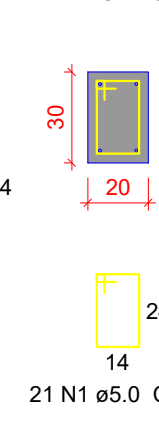


## VB106

ESC 1:50

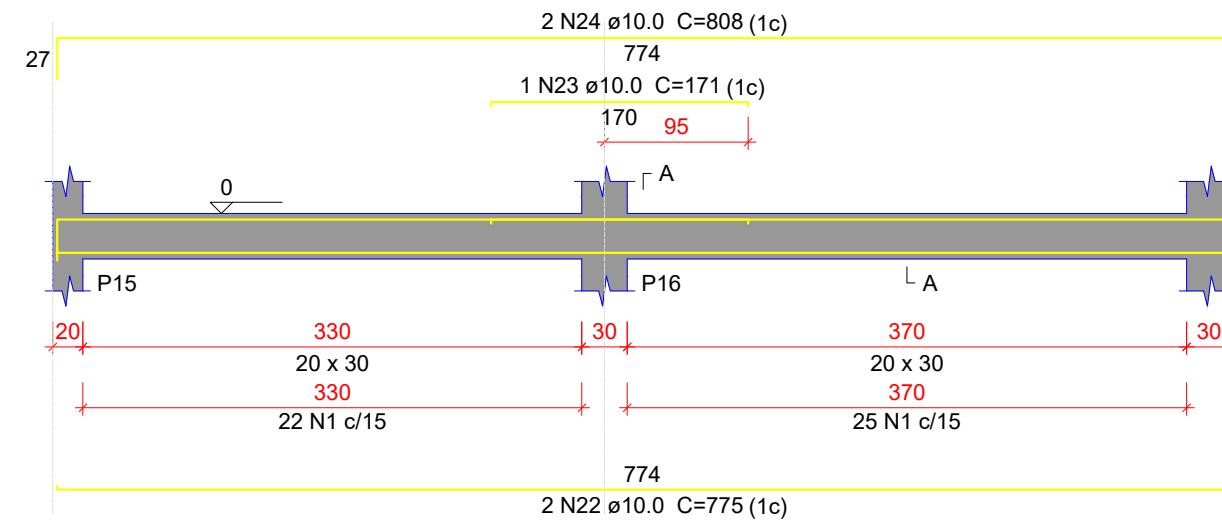


SEÇÃO A-A  
ESC 1:25

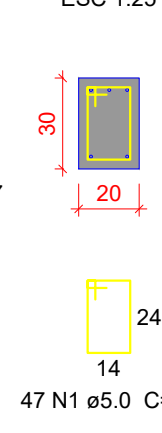


## VB107

ESC 1:50

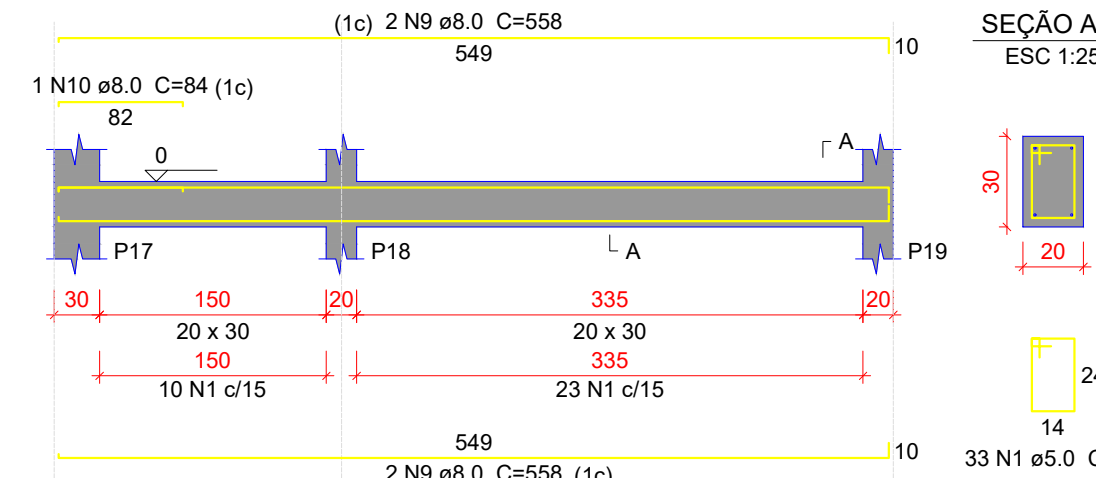


SEÇÃO A-A  
ESC 1:25

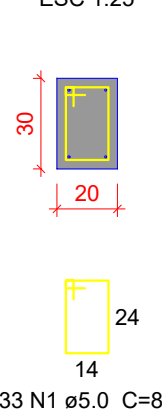


## VB108

ESC 1:50

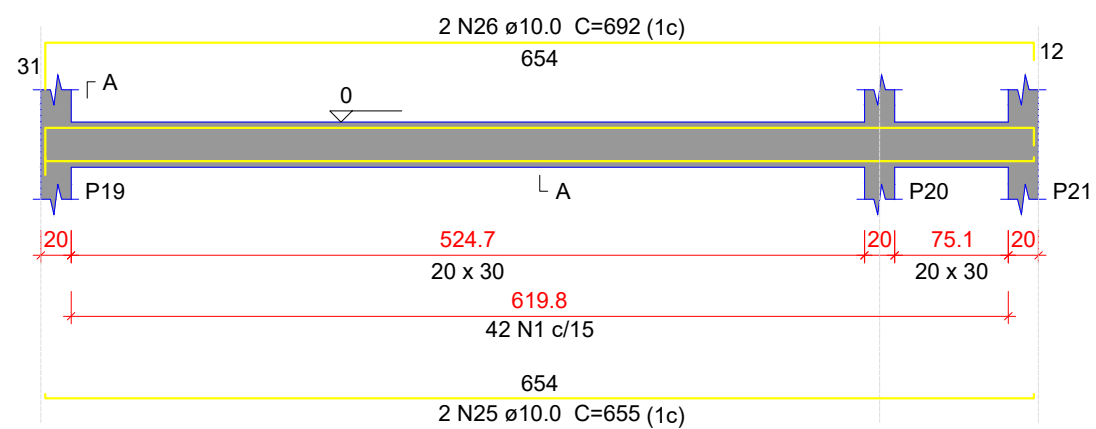


SEÇÃO A-A  
ESC 1:25

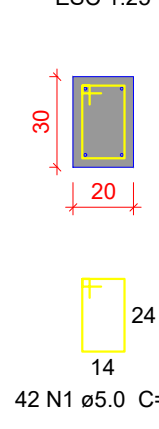


## VB109

ESC 1:50

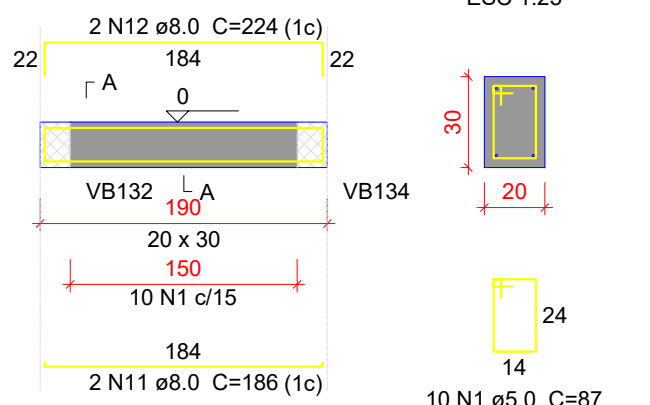


SEÇÃO A-A  
ESC 1:25

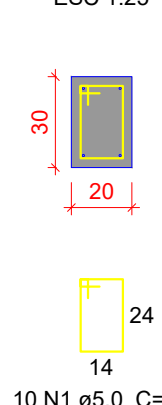


## VB110

ESC 1:50

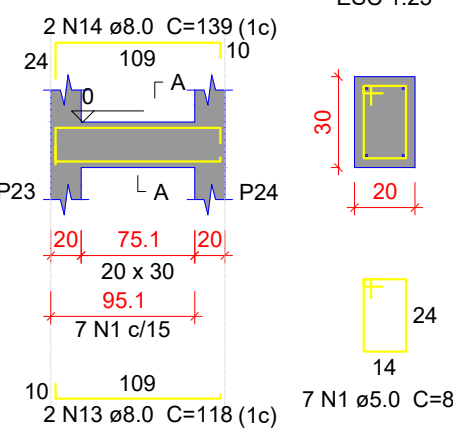


SEÇÃO A-A  
ESC 1:25

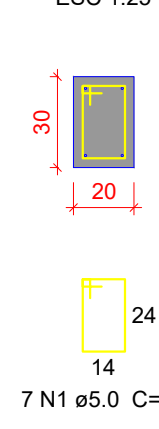


## VB111

ESC 1:50

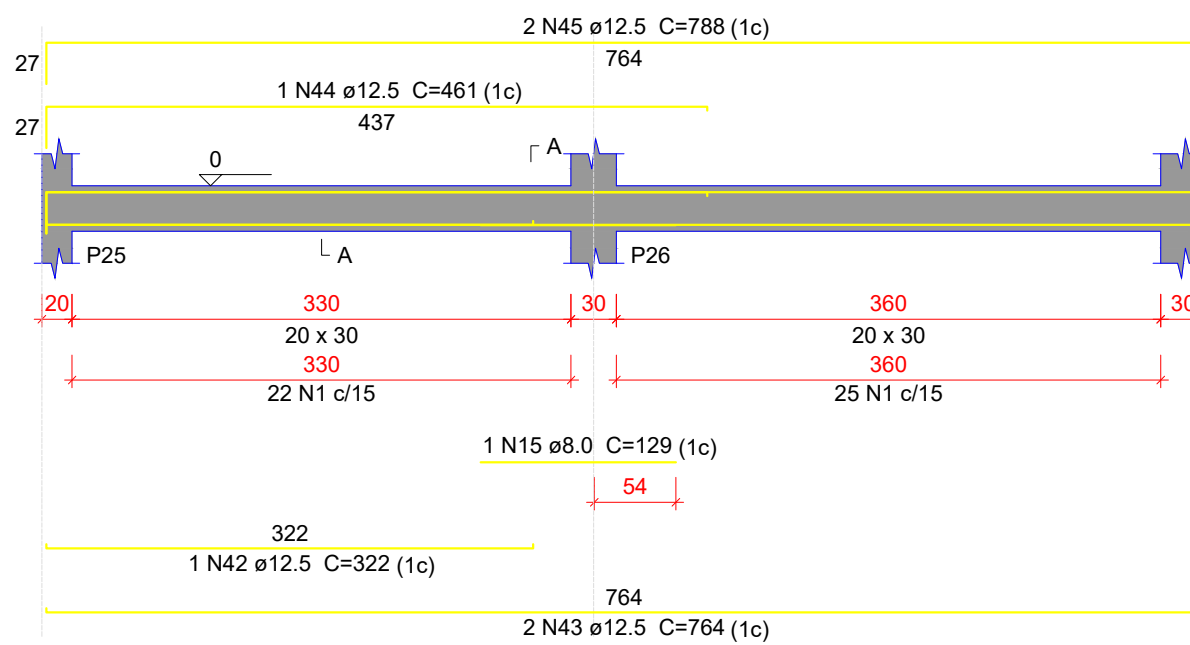


SEÇÃO A-A  
ESC 1:25

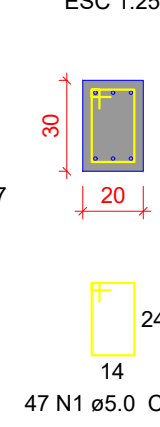


## VB112

ESC 1:50

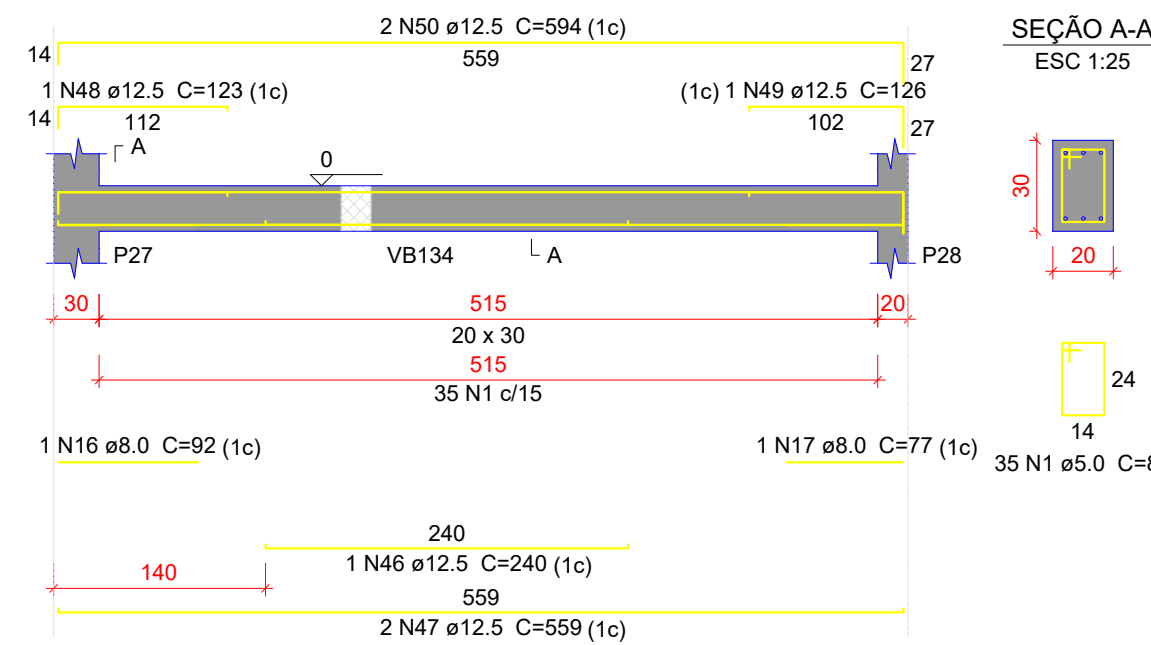


SEÇÃO A-A  
ESC 1:25

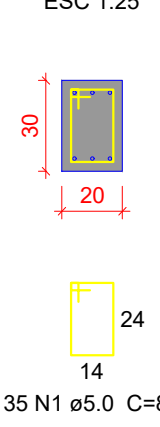


## VB113

ESC 1:50

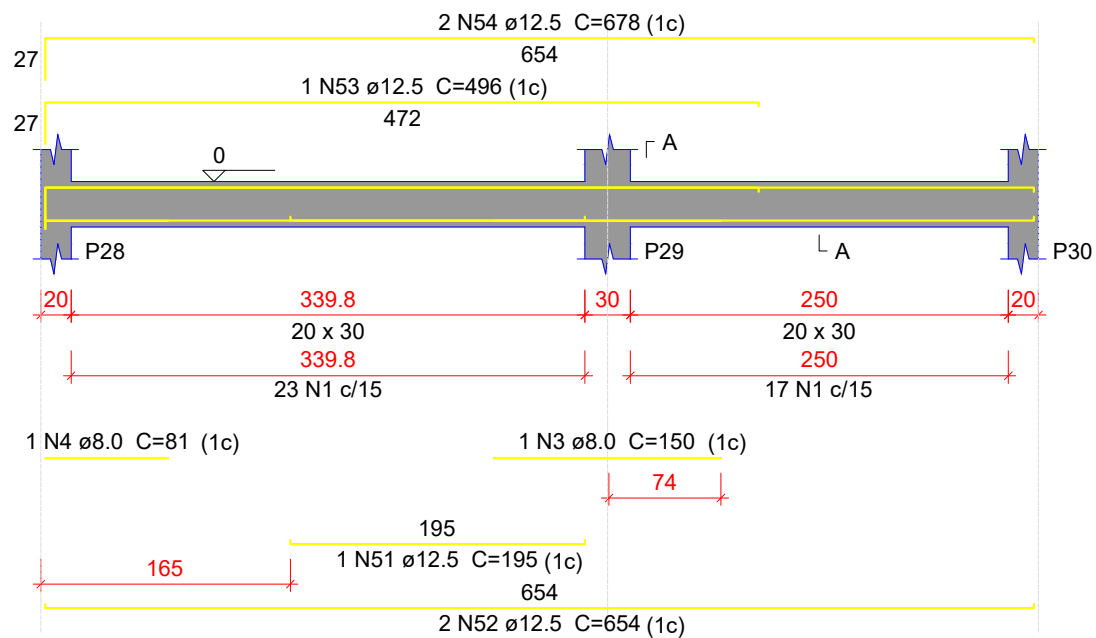


SEÇÃO A-A  
ESC 1:25

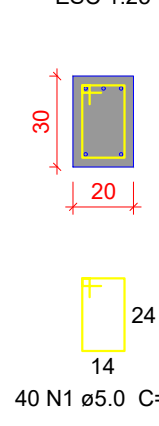


## VB114

ESC 1:50

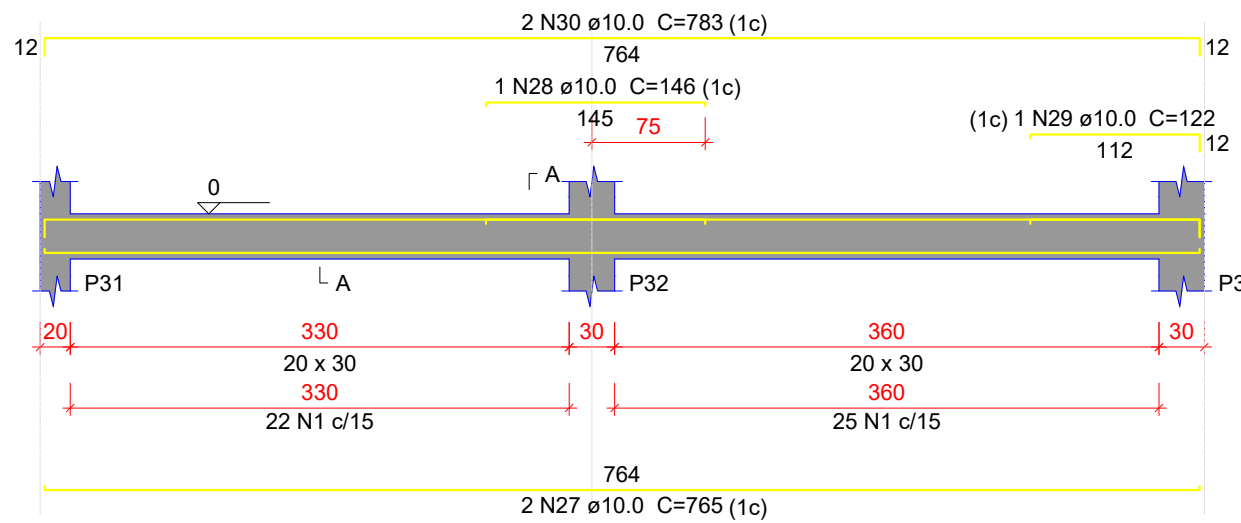


SEÇÃO A-A  
ESC 1:25

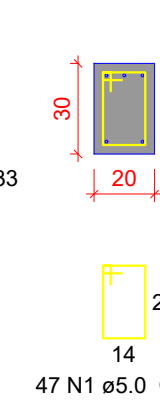


## VB115

ESC 1:50

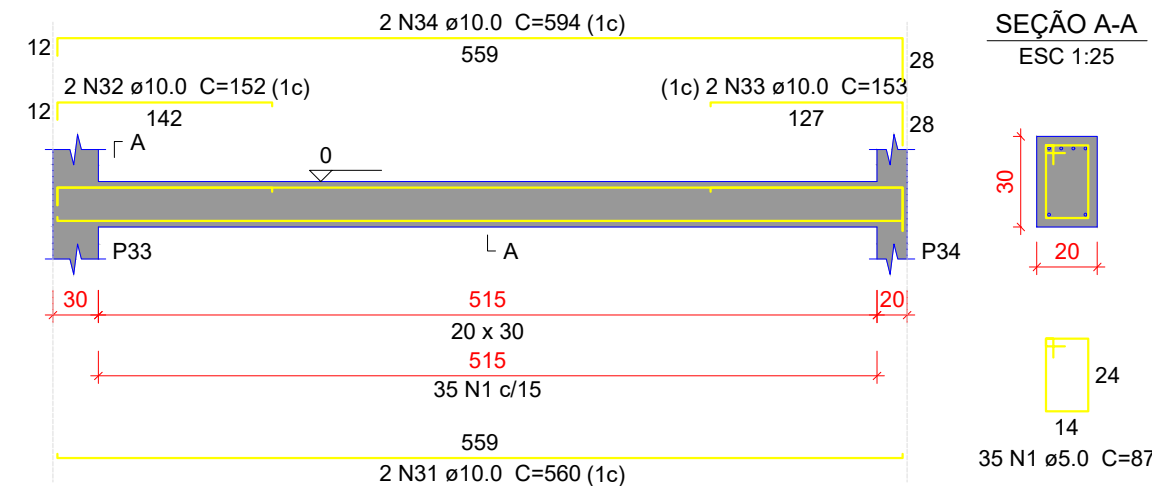


SEÇÃO A-A  
ESC 1:25

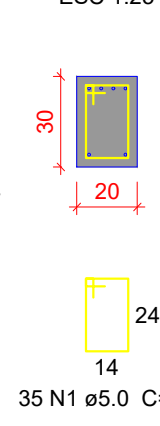


## VB116

ESC 1:50

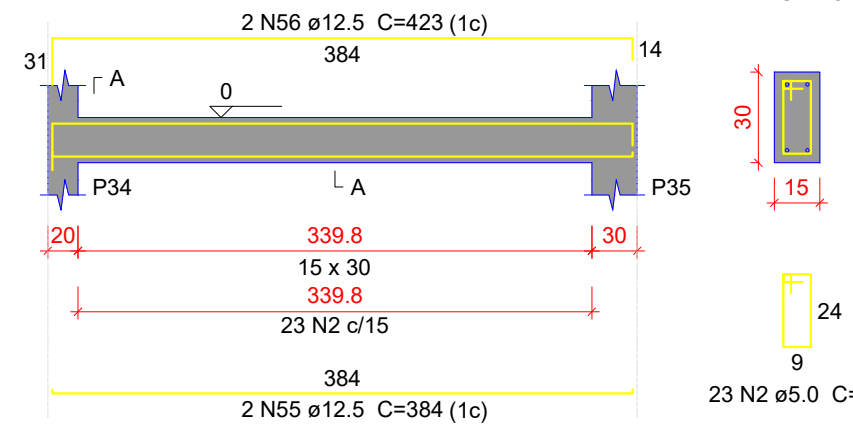


SEÇÃO A-A  
ESC 1:25

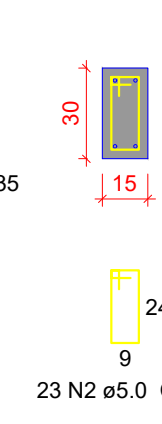


## VB117

ESC 1:50



SEÇÃO A-A  
ESC 1:25



## Relação do aço

AÇO	N	DIAM (mm)	QUANT	C.UNIT (cm)	C.TOTAL (cm)
VB101	1	5.0	497	87	43239
VB104	2	5.0	63	77	4851
VB108	3	8.0	2	150	300
VB110	4	8.0	3	81	243
VB113	5	8.0	2	273	546
VB116	6	8.0	2	295	590
	7	8.0	2	656	1312
	8	8.0	2	670	1340
	9	8.0	4	558	2232
	10	8.0	1	84	84
	11	8.0	2	186	372
	12	8.0	2	224	448
	13	8.0	2	118	236
	14	8.0	2	139	278
	15	8.0	1	129	129
	16	8.0	1	92	92
	17	8.0	1	77	77
	18	10.0	2	1010	2020
	19	10.0	2	1019	2038
	20	10.0	2	370	740
	21	10.0	2	388	776
	22	10.0	2	775	1550
	23	10.0	1	171	171
	24	10.0	2	808	1616
	25	10.0	2	655	1310
	26	10.0	2	692	1384
	27	10.0	2	765	1530
	28	10.0	1	146	146
	29	10.0	1	122	122
	30	10.0	2	783	1566
	31	10.0	2	560	1120
	32	10.0	2	152	304
	33	10.0	2	153	306
	34	10.0	2	594	1188
	35	12.5	1	380	380
	36	12.5	1	287	287
	37	12.5	2	684	1368
	38	12.5	3	708	2124
	39	12.5	1	200	200
	40	12.5	2	264	528
	41	12.5	3	312	936
	42	12.5	1	322	322
	43	12.5	2	764	1528
	44	12.5	1	461	461
	45	12.5	2	788	1576
	46	12.5	1	240	240
	47	12.5	2	559	1118
	48	12.5	1	123	123
	49	12.5	1	126	126
	50	12.5	2	594	1188
	51	12.5	1	195	195
	52	12.5	2	654	1308
	53	12.5	1	496	496
	54	12.5	2	678	1356
	55	12.5	2	384	768
	56	12.5	2	423	846

## Resumo do aço

AÇO	DIAM (mm)	C.TOTAL (m)	PESO + 10 % (kg)
CA50	8.0	82.8	35.9
	10.0	178.9	121.3
	12.5	174.8	185.2
CA60	5.0	480.9	81.5
PESO TOTAL (kg)			
CA50	342.4		
CA60	81.5		

Volume de concreto (C-30) = 4.78 m³  
Área de forma = 65.2 m²

## Características do Projeto

- 1 - COBRIMENTO DAS ARMADURAS - PILARES E VIGAS: 3.0 cm
- 2 - COBRIMENTO DAS ARMADURAS - LAJES E ESCADAS: 3.0 cm
- 3 - COBRIMENTO DAS ARMADURAS - FUNDAÇÃO: 4.5 cm
- 4 - PREVER LASTRO DE CONCRETO MAGRO (5 cm) SOB AS ESTRUTURAS EM CONCRETO.

5 - OS VENTOS INCIDENTES NAS FACES X (90°) E Y (0°), RESPECTIVAMENTE, NÃO OCORREM SIMULTANEAMENTE.

## LEGENDA DA PLANTA DE LOCAÇÃO

- 1 - ORIENTAÇÃO DOS EIXOS DOS PILARES
- 2 - ORIENTAÇÃO DOS EIXOS DOS PILARES



## PROJETO ESTRUTURAL

PROJETO ESTRUTURAL		CONTRATADO: Karlo Henrique Moreira		CLIENTE: SECRETARIA DE ATENÇÃO PRIMÁRIA À SAÚDE	
Endereço: Rua: Brasília, nº 355 Bairro: Centro, Aracaju - MG		Email: engcivil.kaymoreira@gmail.com		OBRA: MINISTÉRIO DA SAÚDE	
Contratado: CREA-MG : 199774/D		VERIF: 28/08/2024		ENTREGA: 28/08/2024	
NOME: VISTO:		REVISÃO: 00		UNIDADE: (EXCETO INDICADO)	
Classe Concreto-MPa: 30		ESCALA: INDICADAS EM PLANTA		TÍTULO: DETALHAMENTO DAS VIGAS EM CONCRETO ARMADO NÍVEL DO PAVIMENTO TERREO	
DESENHO NÚMERO: 00001		MOD: EST		REFERÊNCIA: (1° DIEDRO)	
REVISÃO: 00		FOLHA: 24/34		Número Cliente: 01/2024	